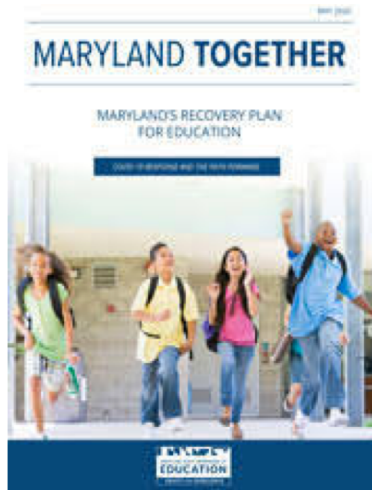


HCPSS COVID-19 Reopening



MSDE Stage Decision Matrix

When the State is in Stage 1:

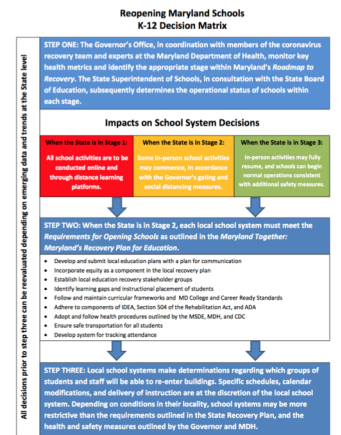
All school activities are to be conducted online and through distance learning platforms.

When the State is in Stage 2:

Some in-person school activities may commence, in accordance with the Governor's gating and social distancing measures.

When the State is in Stage 3:

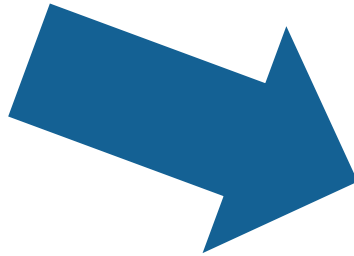
In-person activities may fully resume, and schools can begin normal operations consistent with additional safety measures.



MSDE Stage Decision Matrix

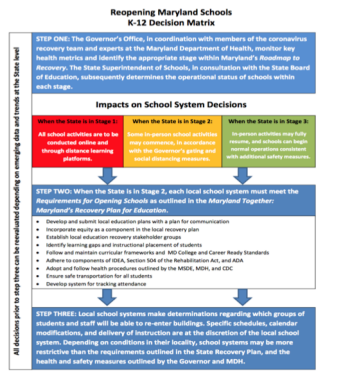
When the State is in Stage 3:

In-person activities may fully resume, and schools can begin normal operations consistent with additional safety measures.



STEP TWO: When the State is in Stage 2, each local school system must meet the *Requirements for Opening Schools* as outlined in the *Maryland Together: Maryland's Recovery Plan for Education*.

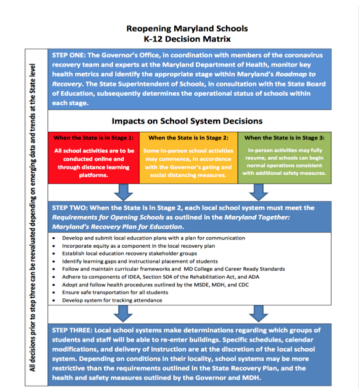
- Develop and submit local education plans with a plan for communication
- Incorporate equity as a component in the local recovery plan
- Establish local education recovery stakeholder groups
- Identify learning gaps and instructional placement of students
- Follow and maintain curricular frameworks and MD College and Career Ready Standards
- Adhere to components of IDEA, Section 504 of the Rehabilitation Act, and ADA
- Adopt and follow health procedures outlined by the MSDE, MDH, and CDC
- Ensure safe transportation for all students
- Develop system for tracking attendance



MSDE Stage Decision Matrix

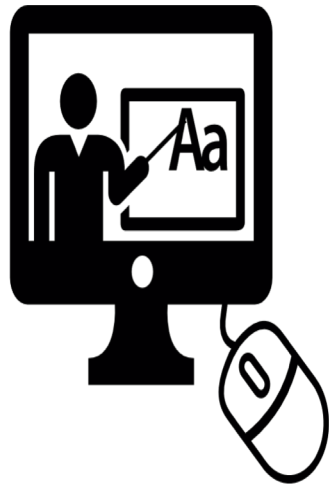
When the State is in Stage 3:

In-person activities may fully resume, and schools can begin normal operations consistent with additional safety measures.



STEP THREE: Local school systems make determinations regarding which groups of students and staff will be able to re-enter buildings. Specific schedules, calendar modifications, and delivery of instruction are at the discretion of the local school system. Depending on conditions in their locality, school systems may be more restrictive than the requirements outlined in the State Recovery Plan, and the health and safety measures outlined by the Governor and MDH.

What metrics need to occur to move from the virtual learning environment?



Virtual Learning
All Online

Operational Preparations

	Yes	No
Facility Alterations and Modifications	✓	
Face Coverings and PPE	✓	
HVAC and Plumbing Adjustments	✓	
Cleaning and Disinfecting Protocols	✓	
Transportation Protocols	✓	

Operational Preparations

	Yes	No
Self-screening Protocols	✓	
Isolation Protocols	✓	
Communication Protocols for Positive Cases/PUI	✓	
Guidelines from CDC and HoCo Health Department	✓	
Collaboration with HoCo Health Department	✓	



Maura J. Rossman, MD
Howard County Health Department

October 22, 2020



Promote. Preserve. Protect.

hchealth.org





Assumptions for Discussion

- In person learning is the best environment for most children's social emotional and cognitive development
- There is risk of transmission among students and staff when schools open in person
- Risk can be mitigated by various strategies to make risk reasonable but not zero
- If infection rates are high in the community, it may be impossible to mitigate risk to a reasonable level



Basic Tenets for Safer Return to School

- Low Community Transmission
- State, County, and HCPSS Policies and Procedures
- Environmental and Behavioral Mitigation Strategies
- Risk Increase with Age of Student



Low Community Transmission

Key Metrics

- Case Incidence (new confirmed daily cases per 100,000) + trend direction
- Percentage of tests positive (positivity rate) + trend direction
- COVID-19 daily hospitalization
- Daily testing volume
- % Contacts Interviewed within 24 hours

Secondary Metrics

- Test turnaround time
- Weekly COVID-19 positive deaths
- Hospitalization rate and capacity

HoCo
10/22/2020

CDC - Core Indicators

INDICATORS	Lowest risk of transmission in schools	Lower risk of transmission in schools	Moderate risk of transmission in schools	Higher risk of transmission in schools	Highest risk of transmission in schools
Number of new cases per 100,000 persons within the last 14 days*	<5	5 to <20	20 to <50	50 to ≤ 200	>200
Percentage of RT-PCR tests that are positive during the last 14 days**	<3%	3% to <5%	5% to <8%	8% to ≤ 10%	>10%
<p>Ability of the school to implement 5 key mitigation strategies:</p> <ul style="list-style-type: none"> • Consistent and correct use of masks • Social distancing to the largest extent possible • Hand hygiene and respiratory etiquette • Cleaning and disinfection • Contact tracing in collaboration with local health department <p>Schools should adopt the additional mitigation measures outlined below to the extent possible, practical and feasible.</p>	Implemented all 5 strategies correctly and consistently	Implemented all 5 strategies correctly but inconsistently	Implemented 3-4 strategies correctly and consistently	Implemented 1-2 strategies correctly and consistently	Implemented no strategies

Mitigation Factors in Place

106

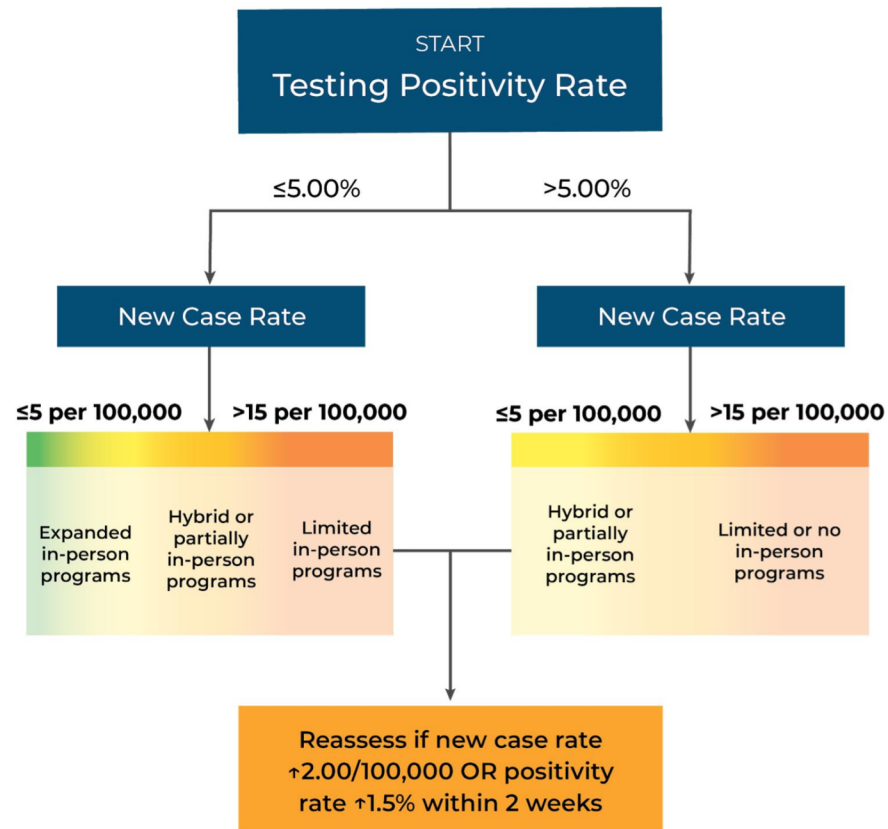
2.6%

MSDE School Opening Algorithm

10/22/20

Howard County
Positivity Rate
(7-day average)
2.7%

Howard County
New Case Rate
(7-day average)
7.0





State, County, and HCPSS Policies and Procedures

- Non-Pharmaceutical Interventions (physical distancing, facial coverings, handwashing)
- Screening for symptoms and exposure
- Routine testing
- Written plans
- Enforcement
- Gathering restrictions



Behavioral and Environmental Mitigation Strategies

- Small groups
- Cohorts
- Staggered schedules
- Increased air circulation
- Desk distancing
- Physical barriers
- Outdoor classrooms
- Routine cleaning of surface areas

Health Metrics Recommendations

Metric	Established metric goal	Criteria	Report Date						
			10-Sep-2020	17-Sep-2020	24-Sep-2020	1-Oct-2020	8-Oct-2020	15-Oct-2020	22-Oct-2020
7-Day Moving Average Case Rate per 100,000 Population (Harvard metric)	<1 per 100,000	Green: <1 per 100,000 Yellow: 1<10 per 100,000 Orange: 10<25 per 100,000 Red: >25 per 100,000	8.9	7.9	5.7	6.5	7.5	8.2	7.0
Percent change in new cases per 100,000 population during the last 7 days compared with the previous 7 days (negative values indicate improving trends) (CDC metric)	<-5%	Green: <-5% Yellow: -5% to <0% Orange: 0% to ≤10% Red: >10%	16.1%	-10.4%	-28.7%	15.5%	15.3%	8.2%	-14.2%
Percent Tests Positive weekly average (Governor's goal)	≤5%	Green: ≤5% Yellow: >5% - 5.25% Red: >5.25% (5% ↑)	3.3%	2.7%	1.9%	2.1%	2.3%	2.4%	2.7%
Lab Turn Around Time - Overall median (Harvard goal)	1 day	Green: 1 day Yellow: 2-3 days Red: ≥4 days	2 8/24-8/30	2 9/7-9/13	2 9/14-9/20	2 9/21-9/27	2 9/28-10/4	2 10/5-10/11	2 10/12-10/18
Percent reached contacts who completed an interview (MDH Performance metric)	>90%	Green: >90% Yellow: 80-90% Red: <80%	93% 9/1-9/7	95% 9/8-9/14	96% 9/15-9/21	96% 9/20-9/26	93% 9/27-10/3	91% 10/4-10/10	90% 10/11-10/17
Percent physical hospital inpatient beds that are occupied (adult acute care) - HCGH (CDC metric)	<80%	Green: <80% Yellow: 80-90% Red: >90%	84%	83%	75%	73%	75%	74%	71%
Percent of physical intensive care unit (ICU) beds that are occupied (adult ICU) - HCGH (CDC metric)	<80%	Green: <80% Yellow: 80-90% Red: >90%	49%	51%	46%	49%	40%	63%	51%
Lab-confirmed COVID Positive Deaths, reported weekly count	≤1 death	Green: ≤1 death Yellow: 2 deaths Red: ≥3 deaths	0	1	2	0	3	0	1

Summary

- In person instruction can resume safely when community metrics indicate infections are being suppressed.
- Behavioral and environmental mitigation strategies are key to successful in person instruction.
- Experience and research indicate elementary school in person instruction may pose less risk for transmission.

Communication Protocols

- Positive Cases/Person Under Investigation (PUI)
- To staff during exposures
- To families during exposures
- Close contacts
- Scenarios
- Current HCPSS data

Communication for Positive Cases/PUI

- General guidelines included in the HCPSS Reopening Plan
- HCPSS remains in daily collaboration and communication with HCHD
- Operational procedures are reviewed and in place with HCHD
 - Follow the *Decision Aid* provided by MDH and MSDE
 - Our operational procedures define roles for HCHD and HCPSS
 - HCHD and local health departments conduct contact tracing
 - HCPSS supports HCHD and notifies employees and parents

Decision Aid: Exclusion and Return for Laboratory Confirmed COVID-19 Cases and Persons with COVID-19-like Illness in Schools, Child Care Programs, and Youth Camps

For the purposes of this decision aid, COVID-19-like illness is defined as: Any 1 of the following: cough, shortness of breath, difficulty breathing, new loss of taste or smell, **OR At least 2 of the following:** fever of 100.4° or higher (measured or subjective), chills or shaking chills, muscle aches, sore throat, headache, nausea or vomiting, diarrhea, fatigue, and congestion or runny nose.

Person (child, care provider, educator, other staff) with **1 new symptom not meeting the definition of COVID-19-like illness.**

Exclude person and allow return when symptoms have improved, no fever for at least **24 hours** without fever-reducing medication, **AND** criteria in the [Communicable Diseases Summary](#) have been met as applicable. **If person develops symptoms of COVID-19-like illness, follow processes below for person with COVID-19-like illness.**

An asymptomatic person (child, care provider, educator, other staff) who tests positive for COVID-19.

The asymptomatic person should stay home for 10 days from positive test.

Close contacts should stay home for 14 days from the date of last exposure **even if they have no symptoms or they have a negative COVID-19 test done during quarantine.**

Person (child, care provider, educator, other staff) with COVID-19-like illness:

- **Exclude** person and recommend that they talk to their health care provider about testing for COVID-19 or whether there is another specific diagnosis.
- **The person should isolate pending test results or evaluation by their health care provider.**
- **Close contacts of the ill person should quarantine per [CDC guidelines](#).**

Person has positive test for COVID-19.

Person does not receive a laboratory test or another specific diagnosis (e.g. influenza, strep throat, otitis) by their health care provider.

Person has negative test for COVID-19.

Health care provider documents that the person has another specific diagnosis (e.g. influenza, strep throat, otitis) or health care provider documents that symptoms are related to a pre-existing condition.

The ill person should stay home at least 10 days since symptoms first appeared **AND** until no fever for at least **24 hours** without fever-reducing medication **AND** improvement of other symptoms.

The ill person should stay home until symptoms have improved, no fever for at least **24 hours** without fever-reducing medication, **AND** criteria in the [Communicable Diseases Summary](#) have been met as applicable.

The person should consider being tested/retested for COVID-19 if symptoms do not improve.

Close contacts DO NOT need to stay home as long as they remain asymptomatic.

Confirmed COVID-19 Cases

Communications During Exposures

Staff

- HCPSS and HCHD consult during positive cases, exposures, and potential exposures
- HCHD manages contact tracing for Howard County Residents, HCPSS supports HCHD with identifying close contacts
- Any individual who may be exposed is contacted during contact tracing
- HCPSS contacts all employees who will need to quarantine as a result of exposure
- HCPSS enacts all protocols with schools as recommended by the HCHD (ex. closing spaces, cleaning & sanitizing)
- School administration communicates with staff. No confidential information is shared.

Communications During Exposures

Families

- HCPSS and HCHD consult during positive cases, exposures, and potential exposures
- HCHD manages contact tracing of Howard County Residents, HCPSS supports
- Parents of any student who may be exposed is contacted during contact tracing
- HCPSS contacts all parents of students who will be quarantined as a result of exposure/potential exposure
- HCPSS enacts all protocols with school as recommended by HCHD (ex. closing spaces, cleaning & sanitizing)
- HCPSS communicates to school community. No confidential personal information or personal student information is shared.

Close Contacts

When a student or staff member becomes ill with a COVID-like illness or tests positive, all close contacts within the school must immediately quarantine at home until:

- The end of their quarantine or isolation period or;
- The student or staff member has a negative PCR SARS CoV- 2 test (rapid negative test results are not accepted) or;
- A letter from a medical provider is obtained with an alternative diagnosis given that explains the symptoms and states that a test for COVID-19 is not necessary

Scenario 1

Positive Case of a Student at a Bus Stop



Notification to families of
students in the school



Notification to bus staff

Scenario 2

Positive Case of a Teacher



Notification to families of
students in the school



Notification to staff in
the school

Dashboard

HCPSS COVID-19 Cases in schools since March 13

	Elementary	Middle	High	Non-School Based	Total
Students	0	0	0	N/A	0
Employees	12	11	2	3	28

** This is internal data of any employee or student who was in a school building during their contagious period.*

Additional Resources:

Howard County Health Department - <https://www.howardcountymd.gov/Departments/Health/MM-Alerts-and-Recalls>

Maryland Department of Health - <https://coronavirus.maryland.gov/>

HCPSS System Status

Howard County Public School System COVID-19 Response Color Bands

HCPSS will move to a virtual environment if the HCHD/MDH report: a positivity rate above 5% over a 7 day range **and** the 7 day rolling average case rate per 100,000 increases to 10 or greater for two consecutive weeks or based on a Howard County Health Department Recommendation. The seven day testing positivity rate and seven day rolling average per 100,000 will serve as primary guides for determining the color band but other data points will be considered. Data will be gathered from the Howard County Health Department on Thursday, analyzed on Friday and on Saturday HCPSS will release the color band for the upcoming week.

	Green <i>Lowest Risk of Transmission in Schools</i>	Yellow <i>Lower Risk of Transmission in Schools</i>	Gold <i>Moderate Risk of Transmission in Schools</i>	Orange <i>Higher Risk of Transmission in Schools</i>	Red <i>Highest Risk of Transmission in School</i>
Testing Positivity Rate (over a 7 day average)	< 3%	3 to ≤ 5%	5.01 to ≤ 5.13%	5.13 to ≤ 5.25%	> 5.25%
7 day rolling average case rate per 100,000 increases for two consecutive weeks	< 4	4 to < 10	10 to < 20	20 to < 25	≥ 25
Instructional Model	Hybrid instructional model	Hybrid instructional model	Virtual instructional model except those participating in small groups	Virtual instruction model except individual student assessments as needed	Virtual instruction model
School Activities	Broader attendance at activities where we can maintain universal precautions	Limit attendance at school activities where universal precautions can be maintained	Limit school activities to small groups where universal precautions can be maintained	School activities in a virtual format	School activities in a virtual format
Mitigation	Continue to engage the community on following universal precautions/mitigation strategies.	HCPSS leaders work with HCHD to determine if increased mitigation and community engagement is necessary to prevent escalation of disease.	HCPSS leaders work with HCHD to determine if increased mitigation and community engagement is necessary to prevent escalation of disease.	HCPSS leaders work with HCHD to increase mitigation and community engagement to prevent escalation of COVID-19.	HCPSS leaders work with HCHD to increase mitigation and community engagement to prevent escalation of COVID-19.
Athletics and Extra-curricular Activities	Athletics - Out of county contests where rates are as above. Spectators limited to the number that can socially distance in the venue.* Extra-curricular - HCPSS Clubs/other groups upon approval may expand gathering numbers not to exceed state/local levels	Athletics - All sports may resume with Intra-county contests only and no spectators Extra-curricular - HCPSS Clubs/groups limited to the number that can socially distance.	Athletics - In person conditioning for all sports and non-contact sport practice Extra-curricular - No more than 5 HCPSS Clubs/groups per school meeting at a time.	Athletics and extra-curricular activities limited to virtual conditioning/meetings.	Athletics and extra-curricular activities limited to virtual conditioning/meetings.
Staffing	Staff required to be in schools	Staff required to be in schools	Staff volunteers and admin coverage	Staff volunteers and admin coverage	No staff in buildings

HCPSS urges everyone to follow CDC and Howard County Health Department guidelines regardless of which color band the system is in.

- Individual schools could have programming altered due to an outbreak in the building. The Maryland Department of Health defines a school outbreak as 3 or more classrooms with cases from separate households that meet the classroom outbreak definition that occur within 14 days or 5% or more unrelated individuals have confirmed COVID-19 within a 14-day period (minimum of 10 unrelated individuals) in the building.
- HCPSS participation in state and regional athletics contests will be determined based on the metrics of HCPSS and participating counties.

Recommendations to move into Hybrid

- Operational Preparations
- HCPSS Recommended metrics
 - Positivity rate $\leq 5\%$ over a 7 day range **and**;
 - The 7 day rolling average new case rate per 100,000 below 10 for two consecutive weeks
- Adoption of a Hybrid Model (Nov 5)
- Review Howard County Health Department Metrics

What is an outbreak?

For Schools: The Maryland Department of Health defines an outbreak in any K-12 school, both public and private, regardless of size as:

Classroom Outbreak:

2 or more laboratory confirmed COVID-19 cases among students/teachers/staff with onset of symptoms (if asymptomatic, use date COVID test obtained) within a 14-day period and who are epidemiologically linked, non-household contacts.

School Outbreak:

3 or more classrooms or cohorts with cases from separate households that meet the classroom/cohort outbreak definition that occurs within 14 days

OR

5% or more unrelated students/teachers/staff have confirmed COVID-19 within a 14-day period (minimum of 10 unrelated students/teachers/staff)

What metrics move a class or school back to virtual learning?

HCPSS Recommendations

A **class** moves to fully virtual if 2 or more individuals in a classroom test positive in a 14 day period and who are epidemiologically linked, non-household contacts.

A **school** moves to fully virtual if 3 or more classrooms with cases from separate households that meet the classroom outbreak definition that occurs within 14 days

OR

5% or more unrelated individuals have confirmed COVID-19 within a 14-day period
(minimum of 10 unrelated individual) in the building

OR

Insufficient staff available for safe and efficient operation of the school

What metrics move the system back to virtual learning?

HCPSS Recommendations

Howard County Public School System moves to fully virtual:

- When the Howard County Health Department reports:
 - positivity rate above 5% over a 7 day range **and**;
 - the 7 day rolling average new case rate per 100,000 increases to 10 or greater for two consecutive weeks

OR

- A Howard County Health Department Recommendation

Decision Point




Criteria for Moving to Hybrid

Operational Preparations as presented

Howard County positivity rate $\leq 5\%$ over a 7 day range **and**;

The Howard County 7 day moving average new case rate per 100,000 is below 10 for two consecutive weeks

Decision Point

Setting	Criteria for Reverting to Virtual
Class 	2 or more individuals in a classroom test positive in a 14 day period and who are epidemiologically linked, non-household contacts.
School 	3 or more classrooms with cases from separate households that meet the classroom outbreak definition that occurs within 14 days or 5% or more unrelated individuals have confirmed COVID-19 within a 14-day period (minimum of 10 unrelated individual) in the building.
District 	When the Howard County Health Department reports a positivity rate above 5% over a 7 day range and the 7 day moving average new case rate per 100,000 increases to 10 or greater for two consecutive weeks or a Howard County Health Department Recommendation

Key Dates

- October 19 - 26 - Staff Return to Work Survey
- November 5 - Presentation of a hybrid model
- November 6 - End of first quarter
- November 19 - Re-evaluation of model for second semester
- February 1 – First day of the second semester

HCPSS COVID-19 Reopening

Questions?